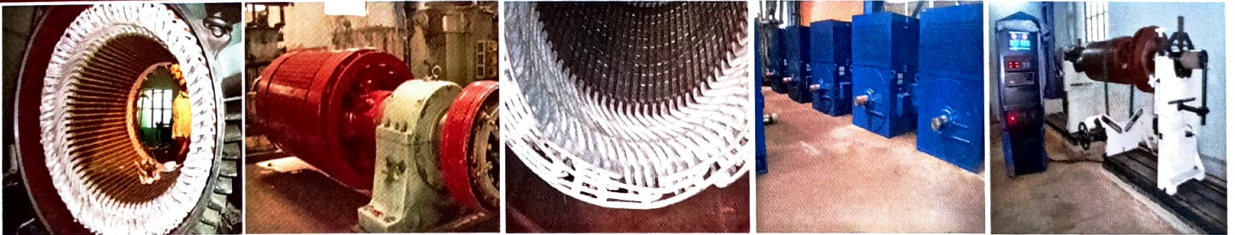


# BLAZE ELECTRIC CO



Plot No. R-28 & 29, INDUSTRIAL ESTATE, T B DAM ROAD,  
HOSAPETE - 583 203, BALLARI DIST, KARNATAKA, INDIA

e-mail - [blaze\\_elec@yahoo.co.in](mailto:blaze_elec@yahoo.co.in)

web - [www.blazeelectricco.com](http://www.blazeelectricco.com)

Contact No's. : 94483 73213, 94484 85213

# BLAZE ELECTRIC CO

**AUTHORIZED SERVICE CENTER OF HT / LT MOTORS & TRANSFORMERS FOR :**

- i) Marathon Electric Motors India Ltd & USA
- ii) Kirloskar Electric Company.

BLAZE ELECTRIC CO is professional in re-winding, repair & reconditioning of HT & LT Motors, Generators, Power Transformers, ESP Transformers, Electromagnetic hot & normal metal lifting duty magnets.

By well experienced engineers

Winders of BHEL, NGEF, GEC and KEC ex-employees are working in our company and our consultants also.

Electric rotating machines - AC & DC 100 MW, 18 KV class HT coils manufacturing, Rewinding & repair works of any MW motors is being done at our works & at site also.

Transformers - 100 MVA, 220 KV class transformers, Furnace transformer coils manufacturing, rewinding and repair works are carried out at our works also we undertake repairs of any MVA rating transformers will be repaired at our work & site also.

## FACILITIES

1. Rotational machines HT coil manufacturing, moulding, hydraulic press with pressure gauge control systems and LT coils at dust free location.
2. Transformers HV and LV coils manufacturing machines units.
3. Vacuum Pressure Impregnation unit (VPI).
4. Dynamic Balancing equipment of IS-12075:2008 suitable for rotating machines with advanced electronics software.
5. Hydraulic Pressing Heavy Equipment big frame size of capacity - 375 tones.
6. Electrical drying chamber (oven).
7. Electrical overhead cranes.
8. Heavy duty Lathe Machine with grinding etc.,

## OUR CLIENTELE

- |                              |                       |
|------------------------------|-----------------------|
| 1. Steel & alloy industries  | 6. Mining Plants.     |
| 2. Power generation stations | 7. Government sectors |
| 3. Sugar plants              | 8. Oxygen Plants      |
| 4. Cement Plants             | 9. Agro Industries    |
| 5. Chemical Industries       |                       |

# BLAZE ELECTRIC CO

**Lab testing facility available in our company :**

Transformers, HT & LT motors with all routine testing facilities available as per IS.

**Note :-** Three phase 50 to 100 Hz, Load & No-load testing facility for transformers, HT & LT motors at Rated Voltage of 415 V, 3.3 KV, 6.6 KV, 11 KV, 22 KV & 33 KV



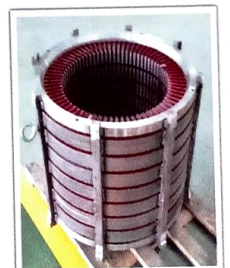
Please visit our company & inspect our setup and provide job orders for transformers, motors and any electric machines.

We will assure that we use standard & good quality materials, Efficient service providing to your company at any sector with competitive prices.

As per your requirement tailor made special non standard motors, transformers and spares will be manufactured and supplied.

We are having a huge experience of more than 25 years and have carried many jobs of various electric machines and have attached some photographs for your references.

**RAJU SULAKHE**  
PROPRIETOR



# BLAZE ELECTRIC CO



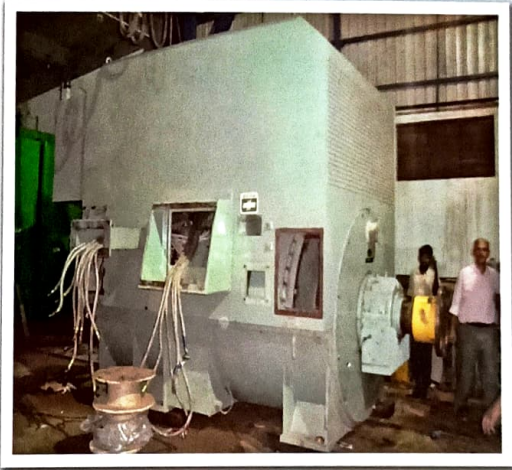
**Our unit was inspected by Chinese motor manufacturers**



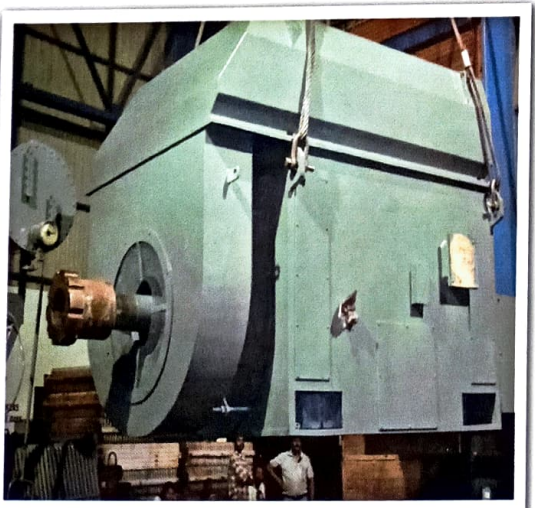
**Transformer inspection team from Germany**



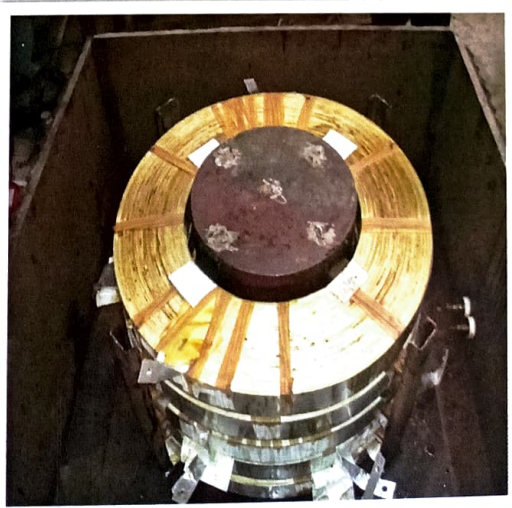
**HT Motor vibration analyzing as per IS 12075**



**8600 KW rewinded & assembled HT Motor**



**HT Motor vibration analyzing in free suspended condition as per IS 12075**

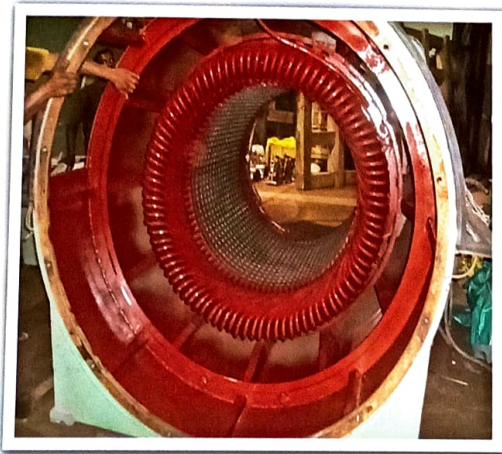


**New coil manufacturing process of permanent electric magnet**

# BLAZE ELECTRIC CO



**Rewinded & Repaired lot of HT Motors in our company**



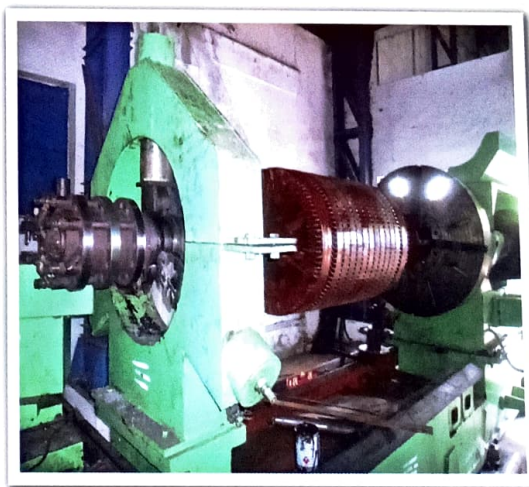
**Rewinded motor stator of 8600 KW  
HT Motor**



**Rewinded motor stator of 2200 KW  
HT Motor**



**Rewinded 450 KW crane duty slipping  
Rotor**



**Machining work is been carried out on  
heavy duty lathe machine**

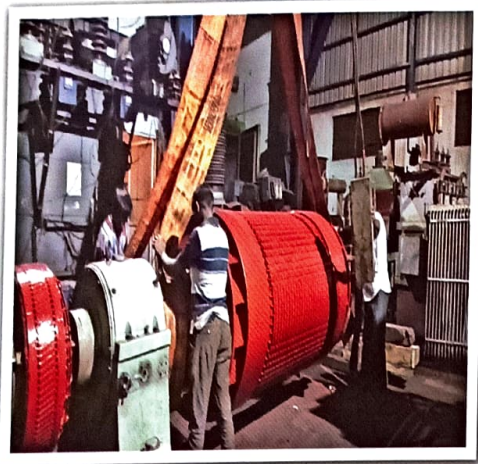
# BLAZE ELECTRIC CO



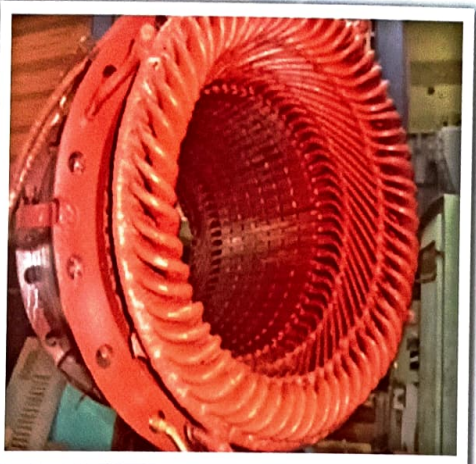
**3000 KW HT Motor**



**Assembling work of 3000 KW HT motor after rewinding of Stator & Rotor**



**25 MW BHEL alternator after rewinding**



**800 KW HT Motor Stator after rewinding**



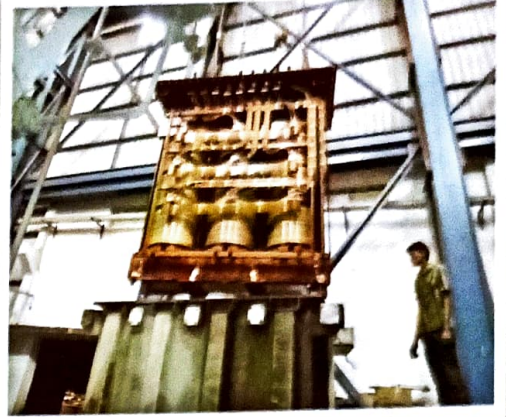
**26 KW hot metal lifting circular magnet after rewinding**



**1800 KW, 690 V, VFD Motor stator after rewinding**



**25 MVA, 110/11 KV Class Power Transformer Manufactured Coils**



**20 MVA, 66/11 KV Power Transformer manufactured coils active part tanking process**



**11 MVA Furnace Transformer active part**



**12.5 MVA 33/11 KV Power Transformer manufactured coils active part tanking process**



**20 MVA 110/11 KV power Transformer active part**



**16 MVA, 33 KV / 400 V Furnace Transformer active part**



# **BLAZE ELECTRIC CO**

Plot No. R-28 & 29, INDUSTRIAL ESTATE, T B DAM ROAD, HOSAPETE - 583 203, Ballari Dist, KARNATAKA, INDIA

OM PRINTERS@9844669981